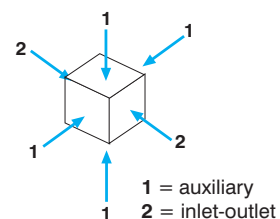


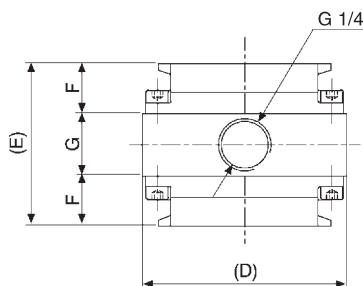
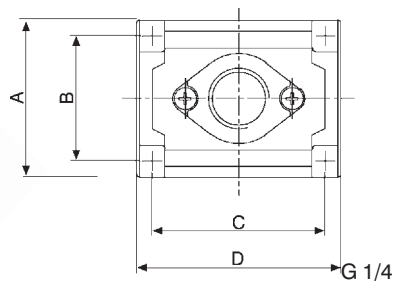
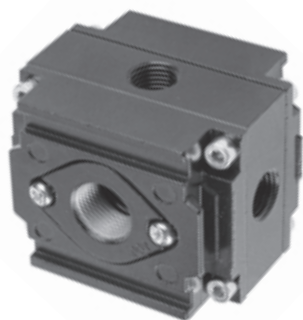
Diverter block, available in 2 sizes with 3 ports each.

| | |
|---------------|-----------------|
| size 1 | 1/4 - 3/8 - 1/2 |
| size 2 | 3/8 - 1/2 - 3/4 |

Auxiliary ports on 4 sides are G 1/4 GAS.



| | HZ1N ... Size 1 | HZ2N ... Size 2 |
|---|--|---|
| Threaded port | G 1/4 - G 3/8 - G 1/2 | G 3/8 - G 1/2 - G 3/4 |
| FlowrateNI/min (7 bar inlet pressure, 6 bar outlet pressure - Δp 1 bar) | G 1/4 - 9800 G 3/8 - 10300 G 1/2 - 11200 | G 3/8 - 13700 G 1/2 - 15300 G 3/4 - 16900 |
| Max. inlet pressure bar - MPa - psi | 10 - 1 -145 | |
| Fluid | filtered air | |
| Min/max. temperature °C | 5 ÷ 60 | |
| weight in kg | 0,30 | 0,45 |



Overall dimensions

| | Size 1 | Size 2 |
|----------|--------|--------|
| A | 50 | 50 |
| B | 40 | 42 |
| C | 55 | 73 |
| D | 63 | 80 |
| E | 52 | 58 |
| F | 16 | 19 |
| G | 20 | 20 |